

Stay in a peaceful and picturesque heaven when visit the historic haven of Chiangmai in northern Thailand.



Tamarind Village is a spacious 40-rooms, village-style accommodation located smack right in the center of Chiangmai's old town.



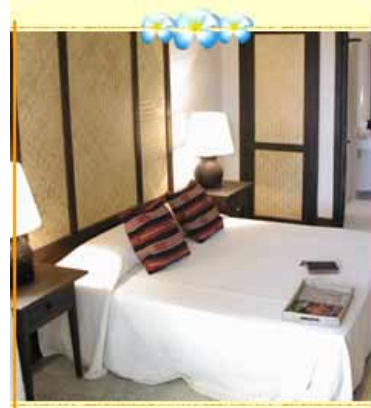
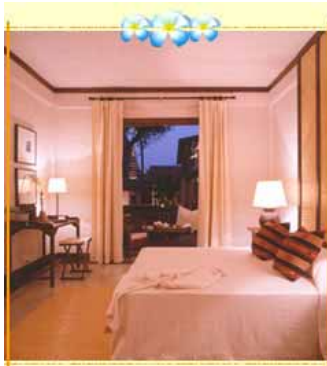
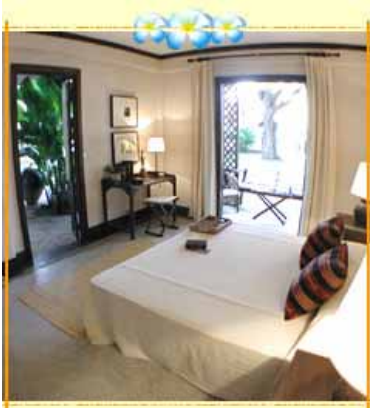
Divided into three private courtyards, this rustic heaven is crated as an ancient village giving an authentic feel of traditional ambiance.



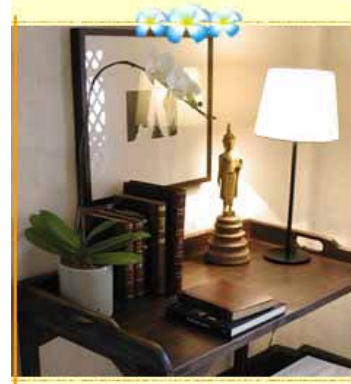
Facing inward into a tranquil atmosphere, Tamarind Village fences out the city's busy buzz in favor of calm serenity. A testament to peaceful quietude, the two hundred year-old tamarind tree, highlights this ancient Lanna city's heavenly haven

Accommodation

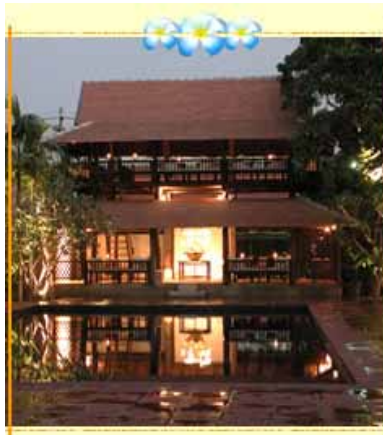
Tamarind's 40-rooms exude a rustic ambiance that is casual and simplistic. Easy-on-the-eyes white cotton makes the curtains and bedsheets.



Teakwood makes the table, a perfect stand for diary writing under the bamboo lamp's soft light while sitting on the cozy rattan chair. On the walls are exquisite black & white photographs of venerable temples; each photograph is carefully selected to complement each room.



Dine on a sumptuous breakfast buffet (American or Continental), delicious home-style cooking (lunch and dinner) and/or diet and vegetarian food in open-air tranquility amid the easy night breeze.



För aktuella priser, klicka på länken "Priser" bredvid hotellnamnet

Facilities

Take advantage of Tamarind's courteous facilities and services including a swimming pool, massage, concierge and travel desk, car rental, laundry and dry cleaning and babysitting.

Swimming Pool

Brilliant blue tiles compliments the natural atmosphere of Tamarind Village while earth tone bricks give a serene, relaxed ambiance when taking a dip in the pool.



Location & Map

The Village-style accommodation paints a picturesque portrait of a peaceful and tranquil ambiance while being located in the heart of the city of Chiangmai. The convenient location is conducive to your need to jet around the city sightseeing the beauty of Lanna culture. Standing on the historic Ratchadamnern Road, Tamarind Village is already close to historic sites such as the Ta-Pae Gate, Wat Umong and Wat Phan On. With the famous Chiangmai night bazaar, the airport and train station are only minutes away.

